

MARVEL CNC TECH.  
CNC Precision  
Components



1

# MARVEL CNC TECHNOLOGIES

An MSME with a Cutting Edge VISION FOR AUTO, AERO AND DEFENCE SECTORS

2024





- ORGANIZATION PROFILE
- MCT OFFERINGS
- ORGANIZATION STRUCTURE
- EXECUTION PROCESS
- INFRASTRUCTURE, FACILITIES
- INTEGRATED SERVICES
- CERTIFICATIONS & STANDARDS (AS 9100D)
- CERTIFICATIONS & STANDARDS (ISO 9001-2015)
- QUALITY ASSURANCE & ENHANCED PROCESSES
- MEASURING SYSTEMS, EQUIPMENTS
- SERVICE PARTNERS
- PROJECTS & CASE STUDIES
- OUR VALUED CUSTOMERS



## About Us

- Marvel CNC technologies is established in the year 2017, created by experienced people with sound knowledge in design / CAD, production, quality aspects, keeping in view of the requirements of medium and large-scale industries, predominantly automobile and aerospace industries and now extended our service to other sectors like Defence, machine tool, electrical, electronic, electro-mechanical, hydro and pneumatic and other industrial sectors, to meet the needs of batch production, research and development
- Marvel CNC technologies primary aim is to take up turnkey projects in the field of die & mold manufacturing and high precision CNC machining components
- We also design & manufacture components, assemblies, jigs and fixtures.
  - Type of Industry: Micro Manufacturer (MSME)
  - PAN : KR03A0038837
  - GSTIN : 29ABGFM7524C1Z9
  - IT PAN: ABGFM7524C



## Vision & Mission

- To provide best in class solutions & services with high quality standards which mainly focus on customer satisfaction through price, quality and response time

## Our Core Strength:

- We possess vast and rich domain experience in Manufacturing industry processes & practices and applications. Marvel's capabilities covers product lifecycle from concept development to manufacturing



- Marvel CNC Technologies is expanding and continually improving, manufacturing capabilities and processes with our focus on the latest and emerging manufacturing techniques to meet the ever increasing industry demands such as flexibility, high quality and reliable machining services..
- We work with a wide range of materials from plastics to special metallic alloys. We undertake CNC machining of precision components and assemblies which are efficiently manufactured and delivered promptly, in both large and small production lots.

**CNC Machining**

CNC machining services for a prototype to high-volume machine parts with the state-of-art facility & wide-ranging machining capabilities.

**Die & Moulds Manufacturing**

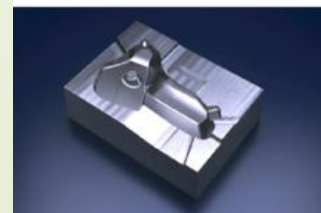
We apply the latest technology to deliver the absolute finest-performing molds and dies that are manufactured with absolute precision and are durable.

**Jigs and Fixtures**

We design and manufacture Jigs and Fixtures that are customized to suit your specific manufacturing needs. Our Jigs and Fixtures are reliable and durable offering ease of operation.

We have the capability to work with a wide range of materials.

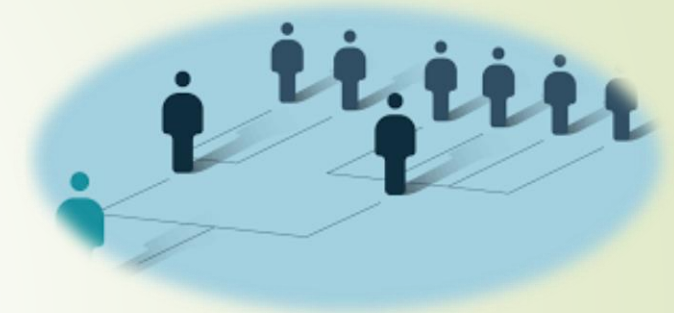
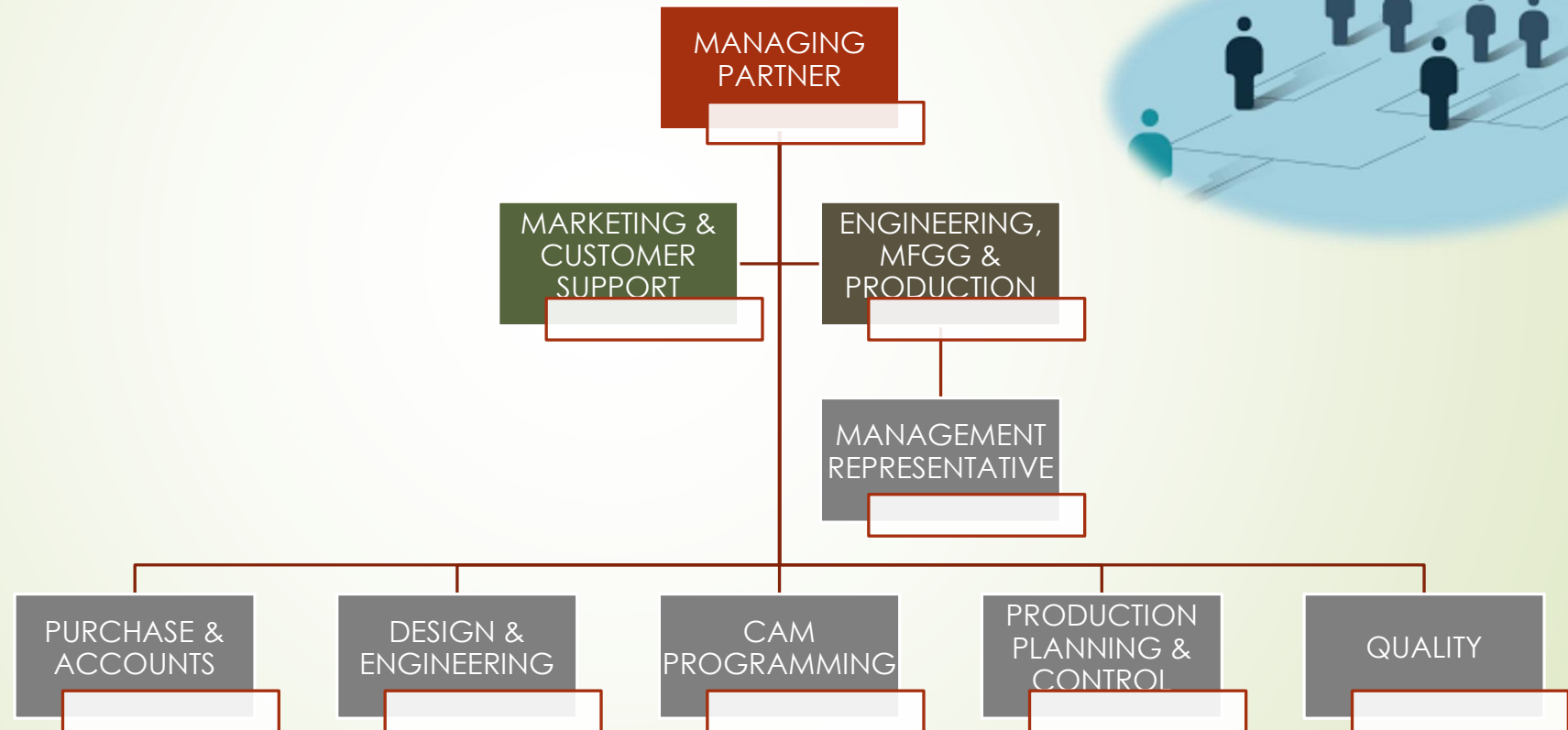
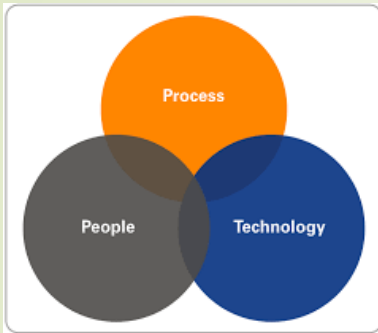
- • Brass • Stainless Steel • Steel  
• Alloy Steel • Carbon Steel
- • Aluminium • Aircraft  
Aluminium • Titanium • Copper
- • Acrylic • Nylon • Various  
Kinds of Plastics

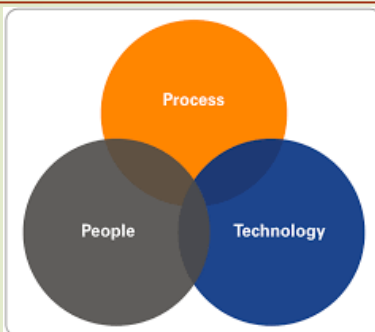
**CNC TURNING****CNC MILLING****DIES & MOULDS****JIGS & FIXTURES**

**Our commitment is to provide our customers with the highest quality precision components in line with their quality requirements.**



# ORGANIZATION STRUCTURE





## INPUT STUDY

- \*Customer Specified Manufacturing Drawings
- \*Customer specified Standards, Guidelines & Procedures
- \*Purchase order and other Terms & Conditions

## PLANNING

- \* Identification of Raw Material, Procurement Vendors and Machining / Sheet metal Fabrication and other manufacturing
- \* Preparation of virtual CNC code for various operations
- \*Identification of Machine Tool, Tooling and Fixtures
- \* Packing & Packaging

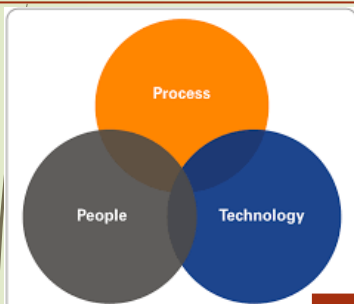
## OPERATIONS AND EXECUTION

- \*Material Procurement, Material Testing and reports,
  - \*Tooling and Fixtures,
  - \*Programming Sample piece Machining –Batch production- Metal Finish(Surface treatment, hardening, grinding etc.,)
- Quality Control:** Material & Quality (FAI, Reports)  
Route Card-Stage, batch sample & final inspection,

## PACKING & DELIVERY

Packaging & Despatch to suit safety of items and long distance delivery travel



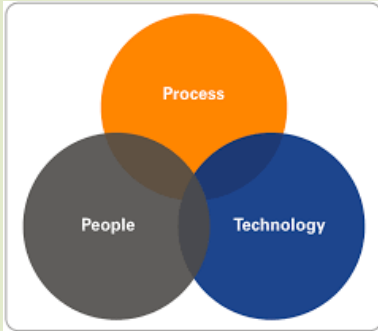


- We have a 3000 Sq. Ft. area facility at our Peenya Industrial area location with 10 VMCs.
- Plans to acquire an additional space of 5000 Sq. Ft Area facility including Surface Finish Capabilities

## **MARVEL (MCT) MANUFACTURING FACILITIES:**

VMC	X'-AXIS	Y'-AXIS	Z'-AXIS	TABLE LOAD CAPACITY	NO. OF AXES	UNITS (QTY)
TAL 650	1020 mm	660 mm	600 mm	1000 Kgs	3	1
JYOTHI	820 mm	510 mm	510 mm	400 Kgs	3	4
COSMOS	800 mm	500 mm	500 mm	600 Kgs	3	1
GLOBAL	1000 mm	600 mm	600 mm	1000 Kgs	4	1
GLOBAL	800 mm	550 mm	550 mm	500 Kgs	3	3
TURNING CNC ACE DESIGNERS	Dia 210 mm	Length 350 mm	--	80 Kgs	2	1





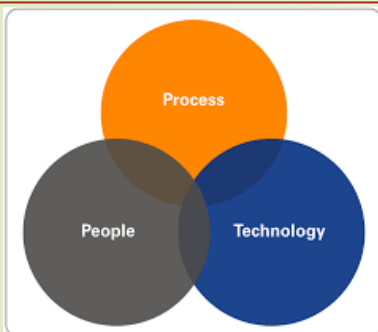
➤ As a part of our focus on quality and customer centric delivery we follow process such as

1. PPAP (Production Part Approval process),
2. PFMEA( Potential Failure Mode Effect Analysis).
3. CP( Control Plan).
4. FAI( First Article Inspection)
5. APQP( Advanced Product Quality Planning)
6. Quality Planning
7. Inspection Reports.
8. Deviation Reports.
9. AQL Standards

- Our experienced and trained workforce's focus on Quality Control & Process optimization to achieve the best quality, cost reduction and on-time deliveries.
- We strongly believe Quality is the core of everything we do everyone's responsibility







**MARVEL CNC TECHNOLOGIES** has been awarded the prestigious **AS9100D** Certification, an add-on feather to our company / organization.

**AS 9100 D**

- Company: Marvel CNC Technologies
- Year of Establishment: DEC/2023



**AS 9100** is an internationally recognized standard that demonstrates our dedication to excellence, continuous improvement, and customer satisfaction towards our valued customers.

This certification reflects our extended commitment and constant focus in maintaining the highest standards in quality management systems, particularly in the **Aerospace industry.**

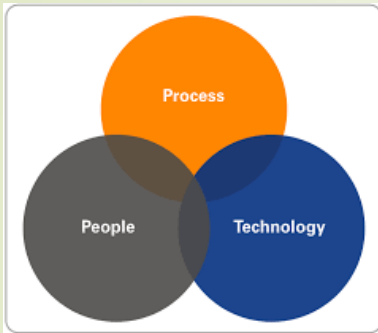


## CERTIFICATIONS & STANDARDS (2)

MARVEL CNC TECH.  
CNC Precision  
Components



**AS 9100D & ISO 9001-2015**



**Marvel CNC Technologies** promotes a culture of quality where each part of our business is encouraged to mature and improve.

### ISO 9001-2015

- Company: Marvel CNC Technologies
- Year of Establishment: 03/10/2017 SSI Certificate



As **ISO 9001:2015** certified company and have implemented Total Quality Management processes and strategies to monitor and control quality while ensuring continued process improvements.

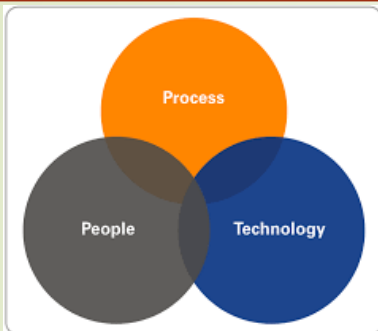


# QUALITY ASSURANCE & ENHANCED PROCESSES

MARVEL CNC TECH.  
CNC Precision  
Components



**AS 9100D & ISO 9001-2015**



**Quality Assurance & Enhanced Processes:** Our thorough In-Process checks, at every stage of the manufacturing process, ensures superior quality, maximum productivity with minimum rejections.

**Material:** We carefully select materials and plan processes to ensure that product specifications are strictly adhered to.

**Compliance:** Rest assured; our practices align with International Aerospace industry standards.

- Inspection is conducted at every stage of manufacturing to ensure our products match high performance standards and eliminate wastage and rejection
- Only products that are certified as 100% compliant with customer's specifications are delivered.

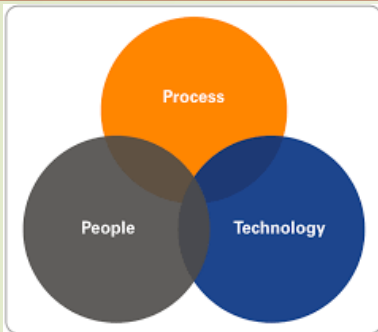


We believe that Quality Accomplishment & Enhanced Processes will contribute to the strength and reliability of our Customer Relationship as we strive for **'First Time Right'**.





# MEASURING SYSTEMS, EQUIPMENTS



- We ensure that all our machines are maintained regularly so that they are in prime condition.
- We regularly calibrate our testing and measuring instruments to ensure that they are error free, which enables us to deliver products that exactly match our customer's specifications



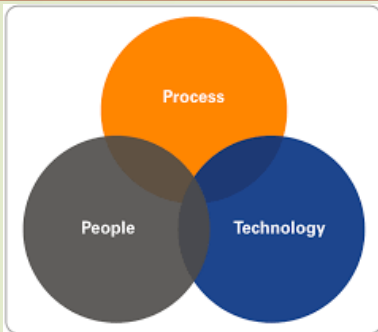
Sr No.	DESCRIPTION	LEAST COUNT (LC)	MAKE	RANGE
1	3D Co-ordinate Measuring Machine (CMM)	$2.2 + L / 350 \mu m$	ACCURATE	X AXIS: 600mm Y AXIS: 800mm Z AXIS: 500mm
2	Digital Height Gauge	0.01mm	BAKER	300 mm
3	Digital Height Gauge	0.01mm	ELECTRONICA	600 mm

- We believe QUALITY is in the fore-front of our industry and we strive for 'First Time Right'.





## SERVICE PARTNERS



### Our Valued Service Providers / Partners:

➤ For Material Testing:



➤ For Surface Finish



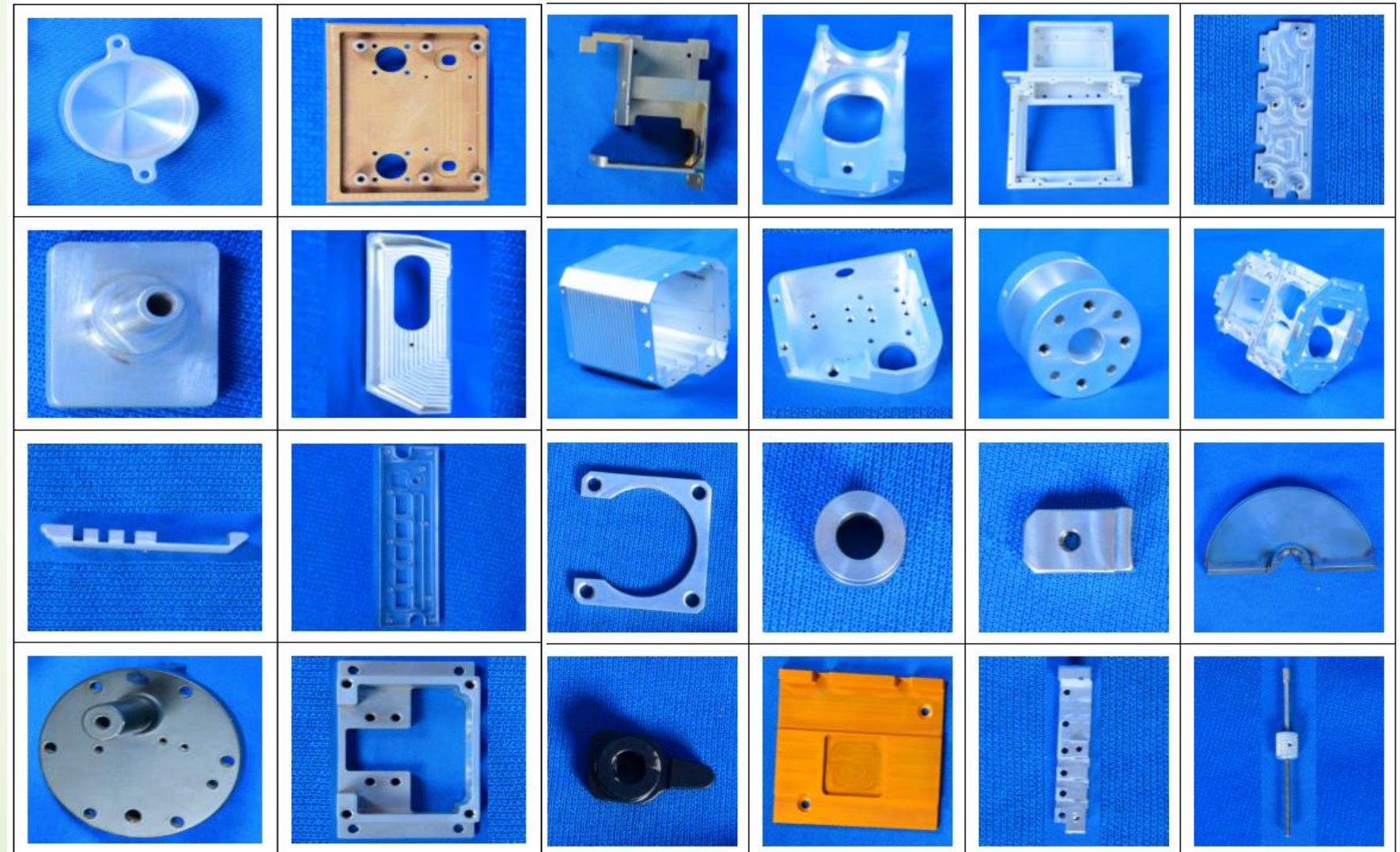
➤ For Raw Material Procurement





## PROJECTS & CASE STUDIES (1/2)

Manufactured  
Components





## Manufactured Components







## PROJECTS & CASE STUDIES (2/2)

### Manufactured Components







## Our Valued Customers

Our Valued Customers:



ETHEREAL MACHINES





WE VALUE YOUR INTEREST IN US



**Marvel CNC Technologies**  
No # 26/A, 3rd Main Rd, 2nd Phase,  
Peenya Industrial Area,  
Bengaluru – 560058.  
Karnataka, INDIA

Mobile (O): +91-99643 30333,

Please visit [www.marvelcncotech.com](http://www.marvelcncotech.com) for the latest Marvel CNC Technologies info.

e-mail us: [mktg@marvelcncotech.com](mailto:mktg@marvelcncotech.com), [info@marvelcncotech.com](mailto:info@marvelcncotech.com)



: [+91-80- 49911186](tel:+91-80-49911186), [+91 9606907372](tel:+91-9606907372), [+91-99003 30333](tel:+91-99003-30333), [+91-8310628276](tel:+91-8310628276)